

SIP Accessorize With Style

REVISION FILE

Internet: Annies-Publishing.com • E-mail: pattern_services@Annies-Publishing.com

Mail: 306 East Parr Road, Berne, IN 46711 • Phone: (260) 589-4000 extension 333

Although we make every effort to prevent errors from being published, we regret that they do occasionally occur and apologize for any inconvenience this may cause. Please note the following revision(s) shown below in red. Please note there may be more than one revision to a pattern depending on what reprint number you may have or what date you purchased your electronic pattern.

Uptown Chic Satchel

Product Code 11191S, Page Number 19

(2/28/11-kw/mjl)

Special Abbreviation

Make Bobble (MB): Knit in front, **back and front** of st, turn, p3, turn, k3, turn; p3, turn; sk2p.

FRONT/BACK

Make 2

Cast on 51 sts.

Row 1 (WS): P17, place marker, work 17 sts following Chart A, place marker, **p17**.

CHART B: SIDE PANEL (page 103)

Revised chart and stitch key are attached.

Row 23--MB should be moved down one space to row 22. Space on row 23 should be blank.

STITCH KEY

Add symbol for: Sl 1 to cn and hold in back, k3, p1 from cn.

Slip-Stitch Sack

Product Code 11191S, Page Number 20

(10/29/10-kw/mjl)

Finished Size

9 inches wide x 9 1/2 inches high (excluding handles)

Luscious Lace Scarf

Product Code 11191S, Page Number 35

(1/5/11-kw/mjl)

Scarf (page 102)

Keeping 2 sts at each edge in garter st and center 43 sts in Triple Leaf pat, work until scarf measures about 80 inches, ending by working Row **12**.

TRIPLE LEAF CHART (page 102)

A revised chart is attached.

Row 4

The third symbol from the right on Row 4 **should be the symbol for k3tog**, NOT k2tog.

All About Short Rows Scarf

Product Code 11191S, Page Number 38

(9/27/11-bw/mjl)

Pattern requires no revision for Row 10. It should read as follows:

Scarf

Row 10: P1, k1.

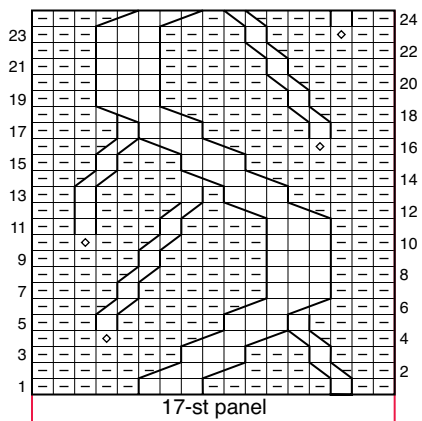


CHART A: FRONT/BACK PANEL

STITCH KEY

- ☐ K on RS, p on WS
- ☐ P on RS, k on WS
- ☒ Ssp
- ☒ P2tog
- ☒ MB: Knit in front, back and front of st, turn; p3, turn; k3, turn; p3, turn; SK2P
- ☒ SI 2 to cn and hold in back, k3, p2 from cn
- ☒ SI 3 to cn and hold in front, p2, k3 from cn
- ☒ SI 1 to cn and hold in back, k1, p1 from cn
- ☒ SI 1 to cn and hold in front, p1, k1 from cn
- ☒ SI 1 to cn and hold in back, k3, p1 from cn

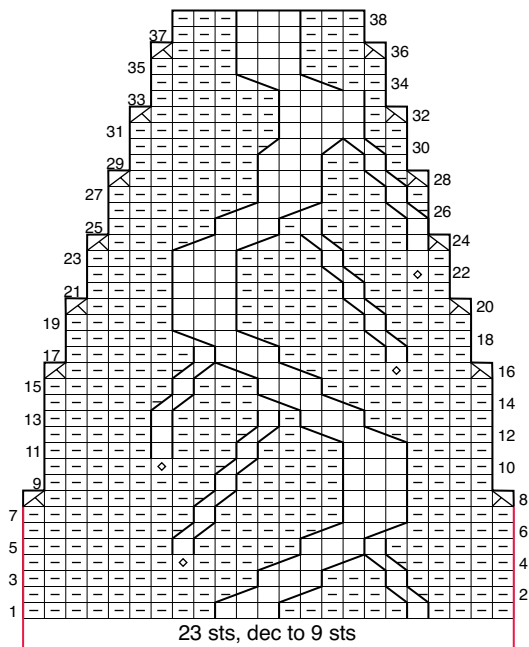
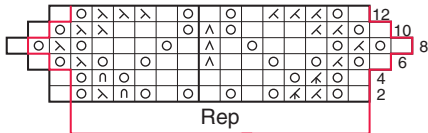


CHART B: SIDE PANEL



TRIPLE LEAF CHART

WS purl rows not shown on chart.

Two garter st edge sts are not included on chart.

SIP Accessorize With Style

REVISION FILE

Internet: Annies-Publishing.com • E-mail: pattern_services@Annies-Publishing.com

Mail: 306 East Parr Road, Berne, IN 46711 • Phone: (260) 589-4000 extension 333

Although we make every effort to prevent errors from being published, we regret that they do occasionally occur and apologize for any inconvenience this may cause. Please note the following revision(s) shown below in red. Please note there may be more than one revision to a pattern depending on what reprint number you may have or what date you purchased your electronic pattern.

Directional Diamonds Scarf

Product Code 11191S, Page Number 44

(7/9/12-cq/mjl)

MATERIALS

*Sample project was completed with Baby Alpaca Twist

(100% alpaca) from Alpaca with a Twist.

CHART A (page 104)

A revised chart and key are attached.

Cabled Earflap Hat

Product Code 11191S, Page Number 75

(10/8/10-kw/mjl)


HAT


Earflap

Row 7: K3, p6, k3.

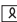
Row 10: P2, pfb, p1, k6, pfb, p3--16 sts.

STITCH KEY

 K on RS, p on WS


 P on RS, k on WS

 Sl 1

 K1-tbl

 Yo

 Ssk

 K2tog

 Sk2p