

Knitting for Babies & Kids

REVISION FILE

Internet: DRGnetwork.com • E-mail: pattern_services@DRGnetwork.com
Mail: 306 East Parr Road, Berne, IN 46711 • Phone: (260) 589-4000 extension 333

Although we make every effort to prevent errors from being published, we regret that they do occasionally occur and apologize for any inconvenience this may cause. Please note the following revision(s) shown below in red. Please note there may be more than one revision to a pattern depending on what reprint number you may have or what date you purchased your electronic pattern.

Sunny Fun Top

Product Code 124005, Page Number 100

(5/23/11-mjl)

A revised Front Panel Chart is attached.

(1/5/10-mdm/mjl)

Special Abbreviations

Bobble: Correct as written.

K(p)f/b: Knit (purl) in front and back of next st.

Left Side & Back

Short row: Correct as written.

Knit 2 rows.

Rep last 3 rows until 16 full rows have been worked.

Step-by-step instructions for **Front Panel** (an option to following chart).

Front Panel Pat (panel of 26 sts, inc to 30 sts, then dec to 27 sts)

Row 1 (WS): K5, p5, k4, p3, k9.

Row 2: P7, p2tog, kf/b, k2, p4, k2, yo, k1, yo, k2, p5. (28 sts)

Row 3: K5, p7, k4, p2, k1, p1, k8.

Row 4: P6, p2tog, k1, pf/b, k2, p4, k3, yo, k1, yo, k3, p5. (30 sts)

Row 5: K5, p9, k4, p2, k2, p1, k7.

Row 6: P5, p2tog, k1, pf/b, p1, k2, p4, ssk, k5, k2tog, p5. (28 sts)

Row 7: K5, p7, k4, p2, k3, p1, k6.

Row 8: P4, p2tog, k1, pf/b, p2, k2, p4, ssk, k3, k2tog, p5. (26 sts)

Row 9: K5, p5, k4, p2, k4, p1, k5.

Row 10: P5, yo, k1, yo, p4, k2, p4, ssk, k1, k2tog, p5. (26 sts)

Row 11: K5, p3, k4, p2, k4, p3, k5.

Row 12: P5, k1, [yo, k1] twice, p4, k1, M1, k1, p2tog, p2, k3tog, p5. (26 sts)

Row 13: K9, p3, k4, p5, k5.

Row 14: P5, k2, yo, k1, yo, k2, p4, k1, kf/b, k1, p2tog, p7. (28 sts)

Row 15: K8, p1, k1, p2, k4, p7, k5.

Row 16: P5, k3, yo, k1, yo, k3, p4, k2, pf/b, k1, p2tog, p6. (30 sts)

Row 17: K7, p1, k2, p2, k4, p9, k5.

Row 18: P5, ssk, k5, k2tog, p4, k2, p1, pf/b, k1, p2tog, p5. (28 sts)

Row 19: K6, p1, k3, p2, k4, p7, k5.

Row 20: P5, ssk, k3, k2tog, p4, k2, p2, pf/b, k1, p2tog, p4. (26 sts)

Row 21: K5, p1, k4, p2, k4, p5, k5.

Row 22: P5, ssk, k1, k2tog, p4, k2, p4, yo, k1, yo, p5. (26 sts)

Row 23: K5, p3, k4, p2, k4, p3, k5.

Row 24: P5, k3tog, p2, p2tog, k1, M1, k1, p4, k1, [yo, k1] twice, p5. (26 sts)

Rows 25–35: Rep Rows 1–11.

Row 36: P5, k1, [yo, k1] twice, p4, k2, p2tog, p2, k3tog, p5. (25 sts)

Row 37: K9, p2, k4, p5, k5.

Row 38: P5, k2, yo, k1, yo, k2, p4, k2, p9. (27 sts)

Row 39: K9, p2, k4, p7, k5.

Row 40: P5, k3, yo, k1, yo, k3, p4, k2, p9. (29 sts)

Row 41: K9, p2, k4, p9, k5.

Row 42: P5, ssk, k5, k2tog, p4, k2, p9. (27 sts)

Row 43: K9, p2, k4, p7, k5.

Row 44: P5, ssk, k3, k2tog, p4, k2, p9. (25 sts)

Row 45: K9, p2, k4, p5, k5.

5/23/2011

Knitting for Babies & Kids

REVISION FILE

Internet: DRGnetwork.com • E-mail: pattern_services@DRGnetwork.com
Mail: 306 East Parr Road, Berne, IN 46711 • Phone: (260) 589-4000 extension 333

Although we make every effort to prevent errors from being published, we regret that they do occasionally occur and apologize for any inconvenience this may cause. Please note the following revision(s) shown below in red. Please note there may be more than one revision to a pattern depending on what reprint number you may have or what date you purchased your electronic pattern.

Row 46: P5, ssk, k1, k2tog, p4, k2, p1, pf/b, p7. (24 sts)

Row 47: K10, p2, k4, p3, k5.

Row 48: P5, k3tog, p3, pf/b, [kf/b] twice, p3, B, p6. (25 sts)

Row 49: K10, p4, k11.

Row 50: P11, k2, M1, k2, pf/b, p9. (27 sts)

Row 51: K11, p2, k1, p2, k11.

Row 52: P4, B, p4, C4R, p1, C4L, p4, B, p4.

Row 53: K9, p2, k5, p2, k9.

Row 54: P8, C3R, p5, C3L, p8.

Rows 55 and 57: K8, p2, k7, p2, k8.

Row 56: P3, B, p4, k2, p7, k2, p4, B, p3.

Row 58: P8, C3L, p5, C3R, p8.

Row 59: K9, p2, k5, p2, k9.

Row 60: P4, B, p4, C4L, p1, C4R, p4, B, p4.

Row 61: K11, dec 5 sts into 1, k11. (23 sts)

Row 62: P3, pf/b, p15, pf/b, p3. (25 sts)

Rows 63, 65, 67 and 69: K25.

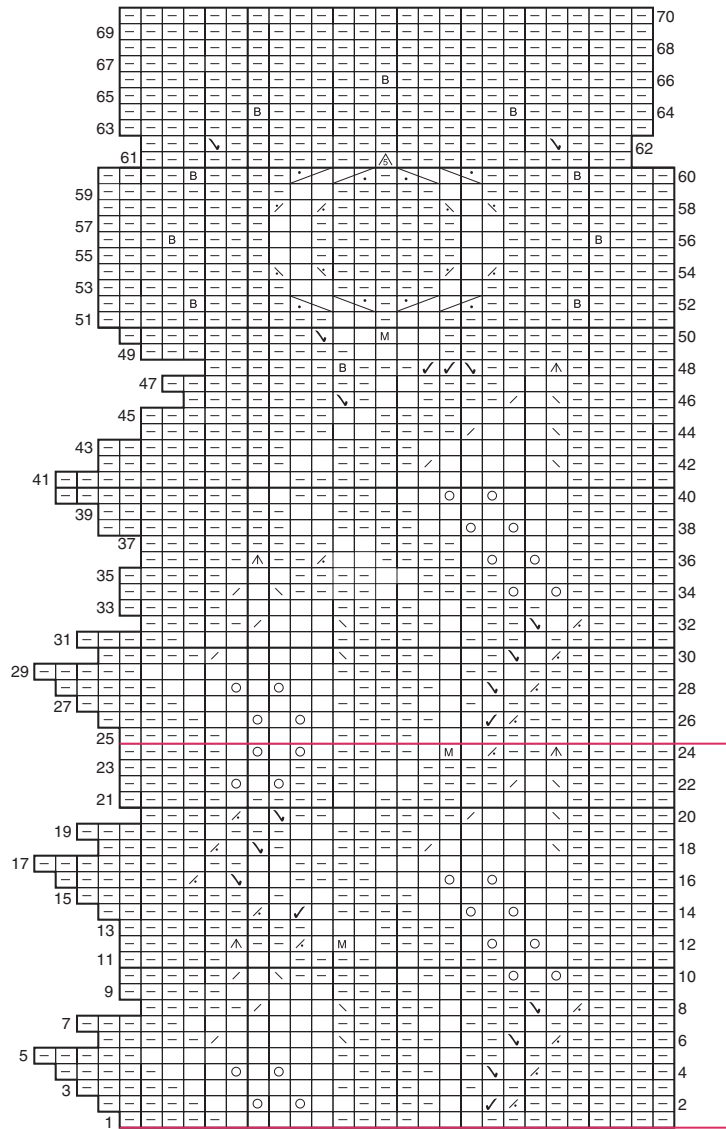
Row 64: P6, B, p11, B, p6.

Row 66: P12, B, p12.

Rows 68 and 70: P25.

Schematic

Should say **TOP** (not Dress)



Work Rows 1–24
twice for sizes
6 & 8 only

FRONT PANEL CHART

Knitting for Babies & Kids

REVISION FILE

Internet: DRGnetwork.com • E-mail: pattern_services@DRGnetwork.com
Mail: 306 East Parr Road, Berne, IN 46711 • Phone: (260) 589-4000 extension 333

Although we make every effort to prevent errors from being published, we regret that they do occasionally occur and apologize for any inconvenience this may cause. Please note the following revision(s) shown below in red. Please note there may be more than one revision to a pattern depending on what reprint number you may have or what date you purchased your electronic pattern.

Bouncing Baby Layette

Product Code 124005, Page Number 11

(1/10/11-kw/mjl)

Body

Divide for fronts and back

Next row: Work across 26 (31, 34) sts and place on holder for right front, bind off next 6 sts for underarm, work across 52 (58, 68) sts, place remaining 32 (37, 40) sts on 2nd holder for left front.

Note: When working fronts and back, if there are not enough sts to turn a cable, work those sts in St st.

Back

Working on 52 (58, 68) sts of back only, continue in established pat until armhole measures 4 inches.

Bind off all sts.

Mark 13 (18, 21) sts at each side for shoulder.

Right Front

Shape neck

Bind off remaining 13 (18, 21) sts.

(11/18/09-cq/mjl)

Sweater

Finishing

Make a twisted cord by inserting a pencil on 1 end and twisting until yarn folds back on itself. Hold twisted cord in middle, fold in half again and tie the 2 ends together.

Booties (page 188)

Finishing

Make a twisted cord by inserting a pencil on 1 end and twisting until yarn folds back on itself. Hold twisted cord in middle, fold in half again and tie the 2 ends together.

(8/24/09-mjl)

Cable & Ribbon Pattern

Row 11: K5, p 10, *k6, p 10, k5, rep from * to last 5 sts, k5.

Knitting for Babies & Kids

REVISION FILE

Internet: DRGnetwork.com • E-mail: pattern_services@DRGnetwork.com
Mail: 306 East Parr Road, Berne, IN 46711 • Phone: (260) 589-4000 extension 333

Although we make every effort to prevent errors from being published, we regret that they do occasionally occur and apologize for any inconvenience this may cause. Please note the following revision(s) shown below in red. Please note there may be more than one revision to a pattern depending on what reprint number you may have or what date you purchased your electronic pattern.

Reversible Cuddle Coat

Product Code 124005, Page Number 127

(8/16/10-sb/mjl)

Materials

Plymouth Encore Worsted 75 percent acrylic/25 percent wool worsted weight yarn (200 yds/100g per skein): 6 (6, 7, 7) skeins purple #1606 (A), 1 (2, 2, 2) skeins cornflower #4045 (B), orange #1383 (C), yellow #1382 (D), 1 skein each black #217 (E), white #146 (F)

Knitting for Babies & Kids

REVISION FILE

Internet: DRGnetwork.com • E-mail: pattern_services@DRGnetwork.com
Mail: 306 East Parr Road, Berne, IN 46711 • Phone: (260) 589-4000 extension 333

Although we make every effort to prevent errors from being published, we regret that they do occasionally occur and apologize for any inconvenience this may cause. Please note the following revision(s) shown below in red. Please note there may be more than one revision to a pattern depending on what reprint number you may have or what date you purchased your electronic pattern.

Embossed Ribs Baby Ensemble

Product Code 124005, Page Number 15

(1/2008)

Hat Page 17

Shape crown

Rnd 1: Purl around, dec 2 (6, 0, 4) sts evenly spaced. (60, 60, 70, 70 sts)

Knitting for Babies & Kids

REVISION FILE

Internet: DRGnetwork.com • E-mail: pattern_services@DRGnetwork.com
Mail: 306 East Parr Road, Berne, IN 46711 • Phone: (260) 589-4000 extension 333

Although we make every effort to prevent errors from being published, we regret that they do occasionally occur and apologize for any inconvenience this may cause. Please note the following revision(s) shown below in red. Please note there may be more than one revision to a pattern depending on what reprint number you may have or what date you purchased your electronic pattern.

Team Spirit Pullover

Product Code 124005, Page Number 171

(1/13/10-cq/mjl)

Back

Back neck shaping

Work even until back measures 15 (16, 17, 18) inches.

Bind off.

Knitting for Babies & Kids

REVISION FILE

Internet: DRGnetwork.com • E-mail: pattern_services@DRGnetwork.com
Mail: 306 East Parr Road, Berne, IN 46711 • Phone: (260) 589-4000 extension 333

Although we make every effort to prevent errors from being published, we regret that they do occasionally occur and apologize for any inconvenience this may cause. Please note the following revision(s) shown below in red. Please note there may be more than one revision to a pattern depending on what reprint number you may have or what date you purchased your electronic pattern.

Sunny Dots Set

Product Code 124005, Page Number 175

(10/13/09-cq/mjl)

Special Abbreviation

Wrap 1 (WR1): Insert RH needle between first 2 sts on LH needle and pull a CC loop through. Place this loop onto LH needle and with MC, k2tog (CC loop and next MC st).

Pattern Stitch

Floral Wrap (multiple of 6 sts + 1)

Rows 1 and 5 (RS): *K3 MC, WR1, k2 MC; rep from * to last st, k1 MC.

Rows 2, 4 and 6: With MC, purl.

Row 3: *K2 MC, WR1, k1 MC, WR1, k1 MC; rep from * to last st, k1 MC.

Pattern Note

When working Floral Wrap pat across row at bottom edge, use separate strand of CC for each row (i.e. cut CC when at end of each row); when working Floral Wrap motifs along cardigan front borders, use 1 strand CC on each side going all the way up.

CARDIGAN

Body

With smaller needle and MC, cast on 127 (133, 145, 157) sts.

Working in garter st, knit 1 row MC, 2 rows CC, 4 rows MC, 2 rows CC, 2 rows MC.

Change to larger needle and work in St st for 4 rows.

Work 6-row Floral Wrap pat across.

With MC, work 2 rows St st.

Set up front border pat (RS): K3 MC, WR1, with MC knit to last 4 sts, WR1, k3 MC.

Next 5 rows: Complete established Floral Wrap motifs at each front border.

With MC, work 2 rows St st.

Work in established pat (6-row Floral Wrap Motif at border edges and 2 rows St st) until body measures 8 1/2 (9 1/2, 10 1/2, 11 1/2) inches, ending with a WS row.

Knitting for Babies & Kids

REVISION FILE

Internet: DRGnetwork.com • E-mail: pattern_services@DRGnetwork.com
Mail: 306 East Parr Road, Berne, IN 46711 • Phone: (260) 589-4000 extension 333

Although we make every effort to prevent errors from being published, we regret that they do occasionally occur and apologize for any inconvenience this may cause. Please note the following revision(s) shown below in red. Please note there may be more than one revision to a pattern depending on what reprint number you may have or what date you purchased your electronic pattern.

Spring Sky Layette

Product Code 124005, Page Number 38

(9/30/08-cq/mjl)

Sweater (page 39)

Sleeves

Change to larger needles and work Row 1 of Stripe pat across all sts. Continue to work in Stripe pat, **inc 1 st at each edge** [every 6th row] 5 (6, 6, 7) times. (44, 48, 50, 54 sts)

Neck Band (page 40)

With RS facing, using smaller needles and **MC**, beg ... complete as written.

Button Band

With RS facing using smaller needles and **MC**, beg ... complete as written.

Buttonhole Band

With RS facing using smaller needles and **MC**, beg ... complete as written.

Hat (page 41)

Sides

Shape crown

Row 1 (RS): K1 for selvage st, [**k6**, k2tog] 10 (11, 12) times, k1 for selvage st. (72, 79, 86 sts)

Row 2 and all WS rows: Purl.

Row 3: K1 for selvage, [**k5**, k2tog] 10 (11, 12) times, k1 for selvage. (62, 68, 74 sts)

Continue in established pat, working decs every RS row **and working** 1 fewer st between each **dec until** 12 (13, 14) sts remaining, end with a WS row.

Knitting for Babies & Kids

REVISION FILE

Internet: DRGnetwork.com • E-mail: pattern_services@DRGnetwork.com
Mail: 306 East Parr Road, Berne, IN 46711 • Phone: (260) 589-4000 extension 333

Although we make every effort to prevent errors from being published, we regret that they do occasionally occur and apologize for any inconvenience this may cause. Please note the following revision(s) shown below in red. Please note there may be more than one revision to a pattern depending on what reprint number you may have or what date you purchased your electronic pattern.

Cat on a Hat & Goose in the Flowers hats

Product Code 124005, Page Number 66

(1/6/10-mdm/mjl)

Hat

Shape top

Dec row: K1, k2tog around, leaving 3 sts before neck, across neck area, and after neck untouched. (62, 62, 65, 67 sts)

Work 2 rows even.

Rep dec row, leaving 4 sts before neck, across neck area, and after neck untouched. (45, 45, 47, 48 sts)

Work even until chart is completed. With MC only, knit 1 row, purl 1 row.

Dec row 2: *K1, k2tog, rep from * around. (30, 30, 32, 32 sts)

Work 1 row even.

Rep dec row 2. (20, 20, 22, 22 sts)

Work even for 3 rows.

Rep dec row 2. (14, 14, 15, 15 sts)

Work even for 3 rows.

Next row: K2tog around. (7, 7, 8, 8 sts)

Cut yarn, leaving a 12-inch end. Draw yarn through remaining sts twice.

Knitting for Babies & Kids

REVISION FILE

Internet: DRGnetwork.com • E-mail: pattern_services@DRGnetwork.com
Mail: 306 East Parr Road, Berne, IN 46711 • Phone: (260) 589-4000 extension 333

Although we make every effort to prevent errors from being published, we regret that they do occasionally occur and apologize for any inconvenience this may cause. Please note the following revision(s) shown below in red. Please note there may be more than one revision to a pattern depending on what reprint number you may have or what date you purchased your electronic pattern.

Toddler & Big Kid sweaters Baby Aran

Product Code 124005, Page Number 68

(8/31/10-mjm)

Revised **CHART B / SLEEVE** is attached.

(1/7/04)

Special Abbreviations

DC (double cable): Sl 2 to cn and hold in back, k1, k 2nd st from cn, k first st, sl 1 to cn and hold in front, k 2nd st of LH needle, k first st, **k1** from cn.

C3L (cable 3 left): Sl 1 to cn and hold in front, k 2nd st of LH needle, k first st, **k1** from cn.

RPC (right purl cross): Sl 1 to cn and hold in back, **k1, p1** from cn.

STITCH KEY

K on RS, p on WS

P on RS, k on WS

DC

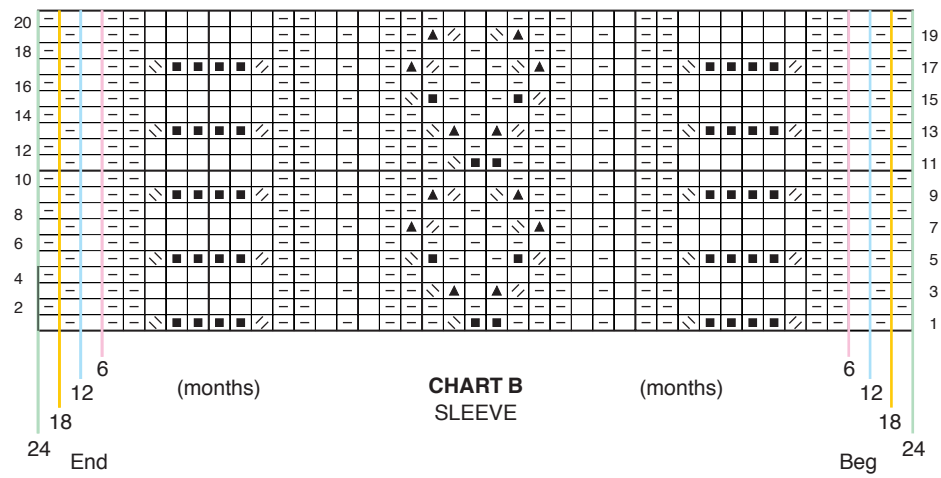
C3L

RKC

LKC

RPC

LPC



Knitting for Babies & Kids

REVISION FILE

Internet: DRGnetwork.com • E-mail: pattern_services@DRGnetwork.com
Mail: 306 East Parr Road, Berne, IN 46711 • Phone: (260) 589-4000 extension 333

Although we make every effort to prevent errors from being published, we regret that they do occasionally occur and apologize for any inconvenience this may cause. Please note the following revision(s) shown below in red. Please note there may be more than one revision to a pattern depending on what reprint number you may have or what date you purchased your electronic pattern.

Diamond Lace Baby Set

Product Code 124005, Page Number 7

(9/9/10-tc/mjl; 8/31/10-cq/mjl)

Bonnet (page 9)

Additional chart for back of bonnet is attached for clarification.

Sides (pages 9-10)

Row 1 and all WS rows: Purl.

Row 2: K2, [yo, ssk, k2, ssk, yo, k1, yo, k2tog, k3] 4 times, yo, ssk, k1.

Row 4: K2, [k1, yo, ssk, k3, yo, ssk, k2, k2tog, yo] 4 times, k3.

Row 6: K2, [k2, yo, ssk, k5, k2tog, yo, k1] 4 times, k3.

Row 8: K2, [k3, yo, ssk, k3, k2tog, yo, k2] 4 times, k3.

Row 10: K2, [k4, yo, ssk, k1, k2tog, yo, k3] 4 times, k3.

Row 12: K1, ssk, [yo, k4, yo, sl 1, k2tog, psso, yo, k3, ssk] 4 times, yo, k2.

Row 14: K2, [k1, yo, k2tog, k3, yo, ssk, k2, ssk, yo] 4 times, k3.

Row 24: K1, yo, [sl 1, k2tog, psso, yo, k3, ssk, yo, k4, yo] 4 times, sl 1, k2tog, psso, yo, k1.

Chart B (page 10)

Revised chart is attached.

(1/24/05)

Edging

Row 8: Bind off 5 sts, **k3**, yo, k2tog, k last edging st tog with 1 st of blanket. (7 sts)

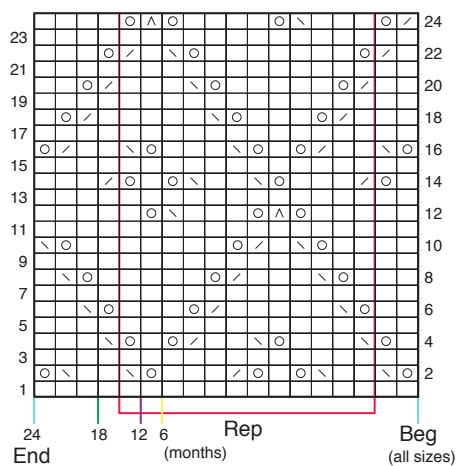


CHART B
Right Front

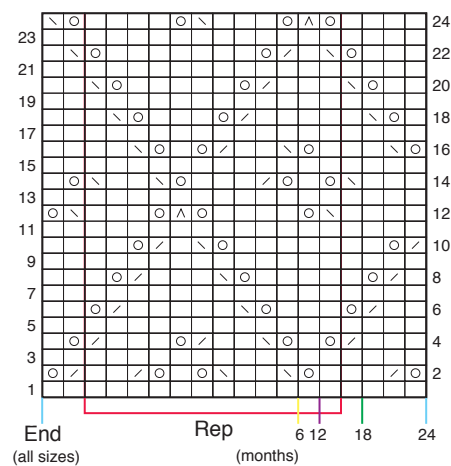


CHART B
Left Front

STITCH KEY	
	K on RS, p on WS
	Yo
	K2tog
	Ssk
	Sl 1, K2tog, psso

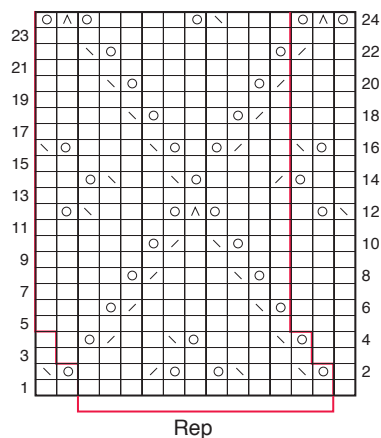


CHART C
Back of Bonnet

Knitting for Babies & Kids

REVISION FILE

Internet: DRGnetwork.com • E-mail: pattern_services@DRGnetwork.com
Mail: 306 East Parr Road, Berne, IN 46711 • Phone: (260) 589-4000 extension 333

Although we make every effort to prevent errors from being published, we regret that they do occasionally occur and apologize for any inconvenience this may cause. Please note the following revision(s) shown below in red. Please note there may be more than one revision to a pattern depending on what reprint number you may have or what date you purchased your electronic pattern.

Toddler & Big Kid sweaters Big Kid Aran

Product Code 124005, Page Number 71

(8/31/10-mjl)

A revised **Chart B / Sleeve** is attached.

(1/7/04)

Special Abbreviations

DC (double cable): Sl 2 to cn and hold in back, k1, k 2nd st from cn, k first st, sl 1 to cn and hold in front, k 2nd st of LH needle, k first st, **k1** from cn.

C3L (cable 3 left): Sl 1 to cn and hold in front, k 2nd st of LH needle, k first st, **k1** from cn.

RPC (right purl cross): Sl 1 to cn and hold in back, **k1, p1** from cn.

STITCH KEY

□ K on RS, p on WS

▤ P on RS, k on WS

▨▩▪▫▬▭▮▯ DC

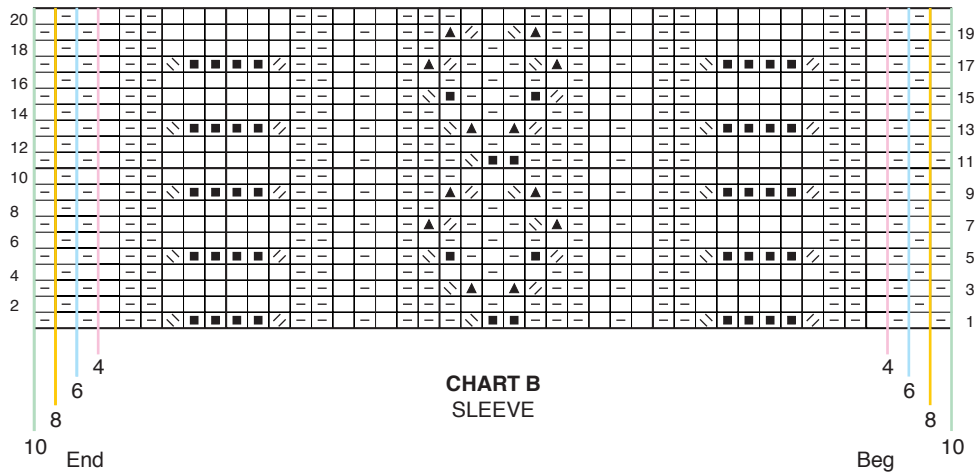
▮▩▪ C3L

▩▪ RKC

▨▩ LKC

▩▪ RPC

▨▩ LPC



Knitting for Babies & Kids

REVISION FILE

Internet: DRGnetwork.com • E-mail: pattern_services@DRGnetwork.com
Mail: 306 East Parr Road, Berne, IN 46711 • Phone: (260) 589-4000 extension 333

Although we make every effort to prevent errors from being published, we regret that they do occasionally occur and apologize for any inconvenience this may cause. Please note the following revision(s) shown below in red. Please note there may be more than one revision to a pattern depending on what reprint number you may have or what date you purchased your electronic pattern.

Primary Colors & Flower Power Vests

Product Code 124005, Page Number 86

(8/31/10-mjl)

(page 87)

continued on page 89

(page 89)

continued from page 86

Knitting for Babies & Kids

REVISION FILE

Internet: DRGnetwork.com • E-mail: pattern_services@DRGnetwork.com
Mail: 306 East Parr Road, Berne, IN 46711 • Phone: (260) 589-4000 extension 333

Although we make every effort to prevent errors from being published, we regret that they do occasionally occur and apologize for any inconvenience this may cause. Please note the following revision(s) shown below in red. Please note there may be more than one revision to a pattern depending on what reprint number you may have or what date you purchased your electronic pattern.

Jellybean Tee

Product Code 124005, Page Number 94

(1/5/10-mdm/mjl)

Special Abbreviations

Dec4 (Decrease 4): Sl 3 sts wyib to RH needle, *pass 2nd st on RH needle over first (center) st, sl center st back to LH needle and pass 2nd st on LH needle over it*, sl center st back to RH needle, rep from * to *. Center st will remain. Knit this st with MC.

Pattern Stitches

A. Embossed Hearts Panel of 15 sts (increases to 21 sts at widest part of heart)

Rows 1-11: Correct as written.

Row 12: K4 MC, p5 A, **p1** MC, p5 A, k4 MC.

Row 13: P4 MC, k5 A, with MC [**p1**, yo, **p1**] in next set, k5 A, p4 MC.

Row 14: K4 MC, p5 A; **with MC, k1, k1-tbl, k1;** p5 A, k4 MC. **Cut A.**

Row 15: **With MC, p4, dec4, p1, yo, p1, yo, p1, dec4, p4.**

Row 16: **K6, k1-tbl, k1, k1-tbl, k6.**