

It's In the Bag Knitting Projects to Take & Make

REVISION FILE

Internet: Annies-Publishing.com • E-mail: pattern_services@Annies-Publishing.com

Mail: 306 East Parr Road, Berne, IN 46711 • Phone: (260) 849-4874

Although we make every effort to prevent errors from being published, we regret that they do occasionally occur and apologize for any inconvenience this may cause. Please note the following revision(s) shown below in red. Please note there may be more than one revision to a pattern depending on what reprint number you may have or what date you purchased your electronic pattern.

Harlequin Socks

Product Code 124028-1, Page Number 29

(4/24/12-st/mjl)

Materials

Sock weight yarn (merino wool/nylon blend):

576 yds/150g red/purple variegated

Uptown Chic Satchel

Product Code 124028-1, Page Number 7

(2/28/11-kw/mjl)

Revised chart and stitch key are attached.

CHART B: SIDE PANEL

Row 23--MB should be moved down one space to row 22.

Space on row 23 should be blank.

STITCH KEY

Add symbol for: Sl 1 to cn and hold in back, k3, p1 from cn.

(2/21/11-kw/mjl)

SPECIAL ABBREVIATION

Make Bobble (MB): Knit in front, back and front of st, turn, p3, turn, k3, turn; p3, turn; SK2P.

(8/6/10-cq/mjl)

FRONT/BACK PIECES

Make 2

Cast on 51 sts.

Row 1 (WS): P17, place marker, work 17 sts following Chart A, place marker, p17.

(5/27/10-cq/mjl)

Chart A: Front/Back Panel

On Rows 8, 10, 12 and 14, the two spaces showing right-facing diagonal lines should be the symbol for: Sl 1 to cn and hold in back, k1, p1 from cn.

Chart B: Side Panel

On Row 14, two spaces showing right-facing diagonal lines should be the symbol for: Sl 1 to cn and hold in back, k1, p1 from cn.

Uptown Chic Satchel

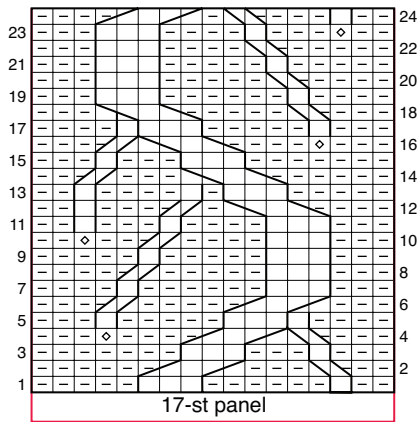


CHART A: FRONT/BACK PANEL

STITCH KEY	
	K on RS, p on WS
	P on RS, k on WS
	Ssp
	P2tog
	MB: Knit in front, back and front of st, turn; p3, turn; k3, turn; p3, turn; SK2P
	Sl 2 to cn and hold in back, k3, p2 from cn
	Sl 3 to cn and hold in front, p2, k3 from cn
	Sl 1 to cn and hold in back, k1, p1 from cn
	Sl 1 to cn and hold in front, p1, k1 from cn
	Sl 1 to cn and hold in back, k3, p1 from cn

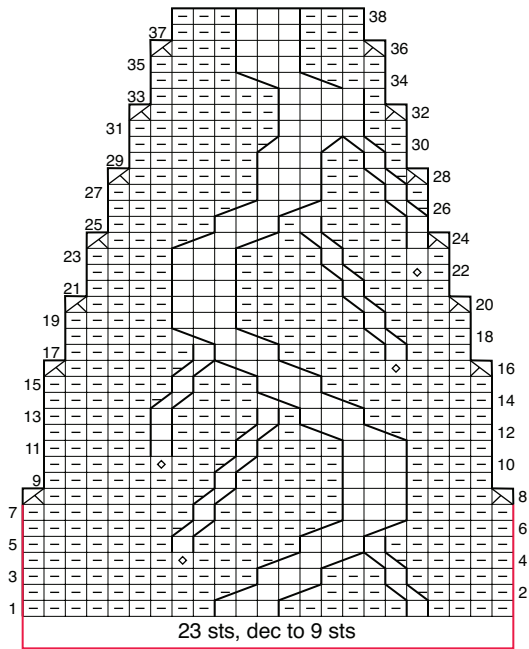


CHART B: SIDE PANEL

It's In the Bag Knitting Projects to Take & Make

REVISION FILE

Internet: Annies-Publishing.com • E-mail: pattern_services@Annies-Publishing.com
Mail: 306 East Parr Road, Berne, IN 46711 • Phone: (260) 849-4874

Although we make every effort to prevent errors from being published, we regret that they do occasionally occur and apologize for any inconvenience this may cause. Please note the following revision(s) shown below in red. Please note there may be more than one revision to a pattern depending on what reprint number you may have or what date you purchased your electronic pattern.

Bodacious Bobble hat

Product Code 124028-2, Page Number 74

(4/24/12-st/mjl)

Materials

Worsted weight yarn (100% merino wool):

94 yds/50g each lime (A), fuchsia (B), and purple (C).

Cozy Hooded Sleeping Sack

Product Code 124028-2, Page Number 88

2/25/10-kw/mjl)

HOOD (page 90)

Set-up row (RS): Sl 1, k23 (29, 34), place marker, work 7 sts in Seed St, place marker, k23 (29, 34), k1-tbl.

Work even in established pat, working side sts in St st, center **7 sts** in Seed St, and slipping first st and knitting last st tbl, until hood measures 7 (8, 8) inches from neckline, ending with a WS row.

Lacy A-Line Baby Dress

Product Code 124028-2, Page Number 76

02/19/2014 (cq/mm)

Pg. 76

Pattern Stitches

Lace (for Back/Front) ...

Row 3: K3, *k2tog, yo, k3, yo, ssk, k7 (9, 11); rep from * to last 10 sts, k2tog, yo, k3, **yo**, ssk, k3.

Row 15: K12 (13, 14), *yo, sk2p, yo, k11 (13, 15); rep from * to last 15 (16, 17) sts, **yo**, sk2p, yo, k12 (13, 14).

It's In the Bag Knitting Projects to Take & Make

REVISION FILE

Internet: Annies-Publishing.com • E-mail: pattern_services@Annies-Publishing.com

Mail: 306 East Parr Road, Berne, IN 46711 • Phone: (260) 849-4874

Although we make every effort to prevent errors from being published, we regret that they do occasionally occur and apologize for any inconvenience this may cause. Please note the following revision(s) shown below in red. Please note there may be more than one revision to a pattern depending on what reprint number you may have or what date you purchased your electronic pattern.

Luxurious Lace Collar

Product Code 124028-3, Page Number 137

(3/1/12-kw/mjl)

A revised chart is attached.

LEAF PANEL CHART (page 139)

Chart is missing yo's on Rows 5 and 7.

The yo symbol needs to be placed in the 6th and 8th box from the right on Rows 5 and 7.

Andrea Beaded Cuffs

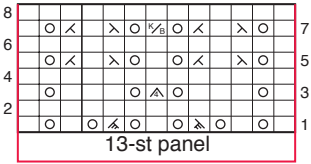
Product Code 124028-3, Page Number 121

(3/10/10-cq/mjl)

DIAMOND CUFF

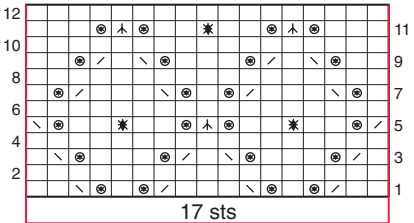
The chart for Diamond Cuff should have beads on all yo's. A revised chart and Stitch Key are attached.

Luxurious Lace Collar



LEAF PANEL CHART

Andrea Beaded Cuffs



DIAMOND CUFF

STITCH KEY

K on RS, p on WS

 P on RS, k on WS