

Circular Knitting Redefined

REVISION FILE

Internet: Annies-Publishing.com • email: Pattern_Services@Annies-Publishing.com

Mail: 306 East Parr Road, Berne, IN 46711 • Phone: (260) 849-4874

Although we make every effort to prevent errors from being published, we regret that they do occasionally occur and apologize for any inconvenience this may cause. Please note the following revision(s) shown below in red. Please note there may be more than one revision to a pattern depending on what reprint number you may have or what date you purchased your electronic pattern.

Aztec Top

Product Code 124030, Page Number Aztec Top

Circular Knitting Redefined

REVISION FILE

Internet: Annies-Publishing.com • email: Pattern_Services@Annies-Publishing.com
Mail: 306 East Parr Road, Berne, IN 46711 • Phone: (260) 849-4874

Although we make every effort to prevent errors from being published, we regret that they do occasionally occur and apologize for any inconvenience this may cause. Please note the following revision(s) shown below in red. Please note there may be more than one revision to a pattern depending on what reprint number you may have or what date you purchased your electronic pattern.

Simple Summer Sweater

Product Code 124030, Page Number 80

(8/23/10-cq/mjl)

BOTTOM BORDERS

Row 11 (WS): Sl 1, k5, purl to last 6 sts, knit to end.

Row 12 (RS): Sl 1, knit to end.

Rep [Rows 11 and 12] 6 times more; cut yarn and leave sts on needle.

Rep for 2nd border; after last row, do not turn and do not cut yarn.

Circular Knitting Redefined

REVISION FILE

Internet: Annies-Publishing.com • email: Pattern_Services@Annies-Publishing.com
Mail: 306 East Parr Road, Berne, IN 46711 • Phone: (260) 849-4874

Although we make every effort to prevent errors from being published, we regret that they do occasionally occur and apologize for any inconvenience this may cause. Please note the following revision(s) shown below in red. Please note there may be more than one revision to a pattern depending on what reprint number you may have or what date you purchased your electronic pattern.

Woodland Rose Tunic

Product Code 124030, Page Number 54

06/06/2014 cq/mm

Page 56

Dec for waist (medium [large, extra-large, 2X-large] only)

Rnd 2: K9 (10, 11, 11) LT, k4 (3, 2, 2), work Rosebud pat over 91 (103, 115, 127) sts [8 (9, 10, 11) total motifs], k4 (3, 2, 2), RT, k17 (19, 21, 21) LT, k99 (109, 119, 131) sts, RT, k8 (9, 10, 10).

Rnd 4: K10 (11, 12, 12) to twisted sts, LT, k3 (2, 1, 1), work Rosebud pat over 91 (103, 115, 127) sts, k3 (2, 1, 1), RT, k19 (21, 23, 23) to twisted sts, LT, k97 (107, 117, 129), RT, k9 (10, 11, 11).

(10/25/10-cq/mjl)

PATTERN STITCHES

Rosebud Pat (multiple of 12 sts + 7)

Rnd 1 and all odd-number rnds: Knit.

Rnd 2: *K1, k2tog, yo, k1, yo, ssk, k6; rep from * to last 7 sts, k1, k2tog, yo, k1, yo, ssk, k1.

Rnd 4: *K2tog, yo, k3, yo, ssk, k5; rep from * to last 7 sts, k2tog, yo, k3, yo, ssk.

Rnd 6: *K1, yo, ssk, yo, k3tog, yo, k6; rep from * to last 7 sts, k1, yo, ssk, yo, k3tog, yo, k1.

Rnd 8: *K2, yo, S2KP2, yo, k7; rep from * to last 7 sts, k2, yo, S2KP2, yo, k2.

Rnd 10: K6, *k1, k2tog, yo, k1, yo, ssk, k6; rep from * to last st, k1.

Rnd 12: K6, *k2tog, yo, k3, yo, ssk, k5; rep from * to last st, k1.

Rnd 14: K6, *k1, yo, ssk, yo, k3tog, yo, k6; rep from * to last st, k1.

Rnd 16: K6, *k2, yo, S2KP2, yo, k7; rep from * to last st.

Rep Rnds 1-16 for pat.

PATTERN NOTES

This garment is worked ... back and forth.

Rosebud pattern is worked ... to maintain the traveling stitch detail.

Because the traveling stitch lines encroach on the Rosebud motifs, it is important to “read your knitting” so that motif patterning is lined up as in the chart. There is one fewer Rosebud motif on each succeeding band of motifs.

Charts for the Fleurette Lace and Rosebud patterns are provided for those preferring to work from charts.

Read pattern thoroughly before beginning. A row counter is helpful when working this pattern.

BODY

Note: The number of sts worked between the twisted/traveling sts and the bands of Rosebud motifs will vary depending on the size. Refer to the Rosebud chart for positioning of Rosebud motifs above each other on succeeding bands.

Dec for waist (small only) (page 56)

Rnd 1 and all odd-number rnds: Knit.

Rnd 2 (dec): K3, LT-Dec, k6, work Rosebud pat over 91 sts, k6, RT-Dec, k5, LT-Dec, k103, RT-Dec, k2--224 sts.

Rnd 4 (dec): K4 to twisted sts, LT-Dec, k4, work Rosebud pat over 91 sts [8 total motifs], k4, RT-Dec, k7, LT-Dec, k99, RT-Dec, k3--220 sts.

Continue Rosebud pat for 44 more rnds, maintaining motifs inside diagonal traveling-st lines and working 1 fewer Rosebud motif on each succeeding band of motifs. *At the same time*, on Rnd 6, work LT/RT instead of LT-Dec/RT-Dec for the traveling-st lines, then alternate LT-Dec/RT-Dec and LT/RT for the traveling-st lines from that point forward--176 sts, with 3 completed Rosebud motifs between front traveling-st lines on last rnd.

Dec for waist (medium [large, extra-large, 2X-large] only) (pages 56-58)

Circular Knitting Redefined

REVISION FILE

Internet: Annies-Publishing.com • email: Pattern_Services@Annies-Publishing.com
Mail: 306 East Parr Road, Berne, IN 46711 • Phone: (260) 849-4874

Although we make every effort to prevent errors from being published, we regret that they do occasionally occur and apologize for any inconvenience this may cause. Please note the following revision(s) shown below in red. Please note there may be more than one revision to a pattern depending on what reprint number you may have or what date you purchased your electronic pattern.

Bohemian Rhapsody jacket

Product Code 124030, Page Number 46

(8/20/10-cq/mjl)

Pattern Stitch

Woven Pat (multiple of 3 sts)

Row 2: Carrying CC without knitting it, *sl 1 **wyib**, sl 2 **wyif**; rep from * across.

Row 10: Carrying CC without knitting it, *sl 1 **wyif**, sl 2 **wyib**; rep from * across.

BODY

Buttonholes and waist shaping (page 48)

Beg Woven pat and work 2 rows.

Rep Dec row, including button hole—131 (149, 161, 176, 188, 203) sts.

Work 5 rows even, completing buttonhole on first row.

Next row (RS): Work Row 9 of Woven pat to 2 sts before first marker, sl 1 **wyib**, sl 1 **wyif**, sm; **sl 1 wyib, sl 1 wyif**; work in pat to 2 sts before 2nd marker, sl 1 **wyib**, sl 1 **wyif**, sm; sl 1 **wyib**, sl 1 **wyif**, work in pat to end of row.

Next row: Work Row 10 of pat to 2 sts before first marker, sl 1 **wyif**, sl 1 **wyib**, sm; sl 1 **wyif**, sl 1 **wyib**. work in pat to 2nd marker, sm; sl 1 **wyif**, sl 1 **wyib**, work in pat to end of row.

Work 6 rows even.

Next row (RS): Work Row 1 of pat to 2 sts before first marker, sl 1 **wyif**, sl 1 **wyib**, sm; **sl 1 wyif, sl 1 wyib**; work in pat to 2 sts before 2nd marker, sl 1 **wyif**, sl 1 **wyib**, sm; sl 1 **wyif**, sl 1 **wyib**, work in pat to end of row.

Next row: Work Row 2 of pat to 2 sts before first marker, sl 1 **wyib**, sl 1 **wyif**, sm; sl 1 **wyib**, sl 1 **wyif**; work in pat to **2 sts before** 2nd marker, **sl 1 wyib, sl 1 wyif**, sm; sl 1 **wyib**, sl 1 **wyif**, work in pat to end of row.

Inc row (RS): Work buttonhole, *work to 1 st before marker, kfb, sm, kfb; rep from *, work to end—135 (153, 165, 180, 192, 207) sts.

Work 7 rows even in Woven pat, completing buttonhole on first row.

Rep Inc row, omitting buttonhole—139 (157, 169, 184, 196, 211) sts.

Work 5 rows even.

Next row (RS): Work Row 1 of pat to 1 st before first marker, sl 1 **wyif**, sm; sl 1 **wyib**, work in pat to **1 st** before 2nd marker, sl 1 **wyif**, sm; sl 1 **wyib**, work in pat to end of row.

Next row: Work Row 2 of pat to 1 st before first marker, sl 1 **wyib**, sm; **sl 1 wyif**, work in pat to **1 st before** 2nd marker, **sl 1 wyib**, sm; **sl 1 wyif**, work in pat to end of row.

(8/17/10-cq/mjl)

BODY (page 48)

Row 2: Join MC and **purl**.

SLEEVES (page 50)

Row 2: Join MC, and **purl**.

Circular Knitting Redefined

REVISION FILE

Internet: Annies-Publishing.com • email: Pattern_Services@Annies-Publishing.com

Mail: 306 East Parr Road, Berne, IN 46711 • Phone: (260) 849-4874

Although we make every effort to prevent errors from being published, we regret that they do occasionally occur and apologize for any inconvenience this may cause. Please note the following revision(s) shown below in red. Please note there may be more than one revision to a pattern depending on what reprint number you may have or what date you purchased your electronic pattern.

Aztec Top

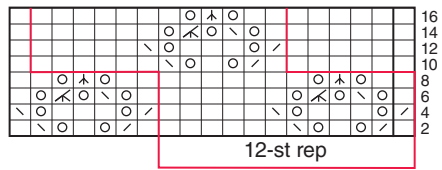
Product Code 124030-2, Page Number 92

(3/23/2015) BS

page 94

BODY


Rnd 4: [K2, *k1; rep from * to 3 sts before marker, k3, sm, k3] twice.




Rosebud


Note: Only even-numbered rnds are shown;
knit all odd-number rnds

STITCH KEY

 6-st rep worked in the rnd;
work these sts only

 6-st rep worked back and
forth; work entire chart

 K on RS, p on WS

 No stitch

 Yo

 Ssk

 K2tog

 S2KP2

 K3tog